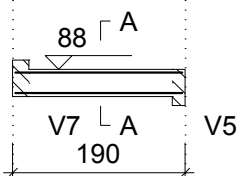


V28 (14 x 30)

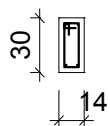
ESC 1:100

2 N263 \varnothing 5.0 C=184



2 N264 \varnothing 8.0 C=184

SEÇÃO A-A
ESC 1:50

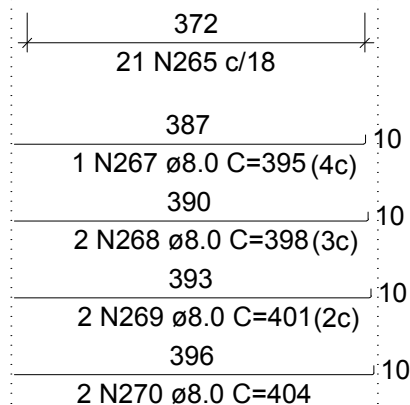


11 N262 \varnothing 5.0 C=75

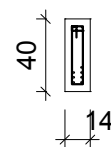
V29 (14 x 40)

ESC 1:100

2 N266 \varnothing 5.0 C=396



SEÇÃO A-A
ESC 1:50

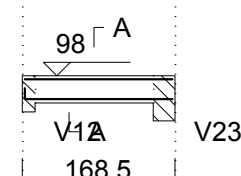


21 N265 \varnothing 5.0 C=87

V31 (14 x 30)

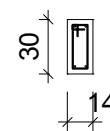
ESC 1:100

2 N284 \varnothing 10.0 C=162



12 N285 \varnothing 10.0 C=172

SEÇÃO A-A
ESC 1:50



19 N283 \varnothing 5.0 C=75